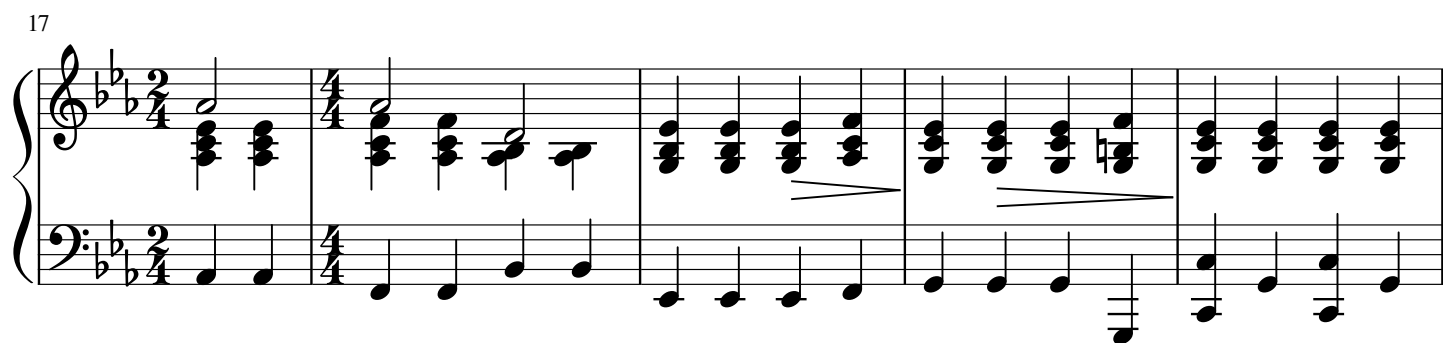
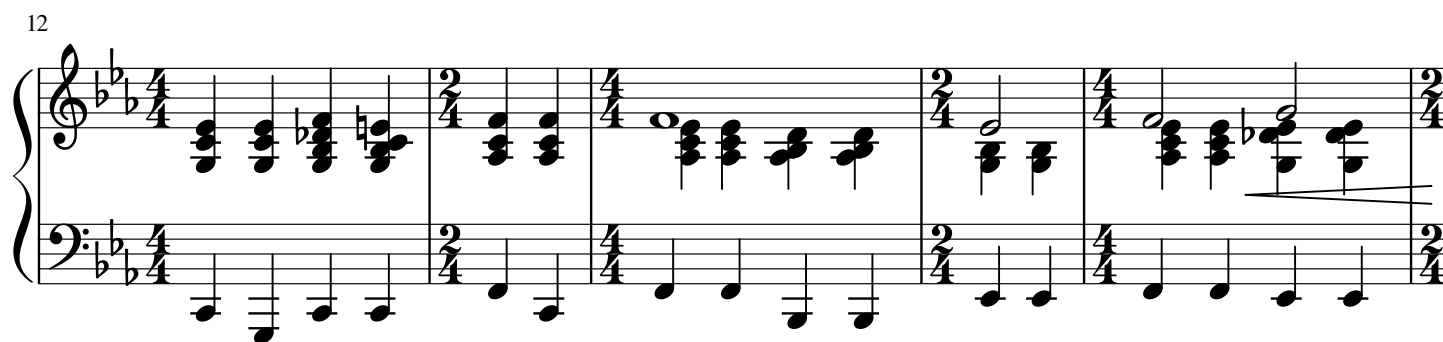
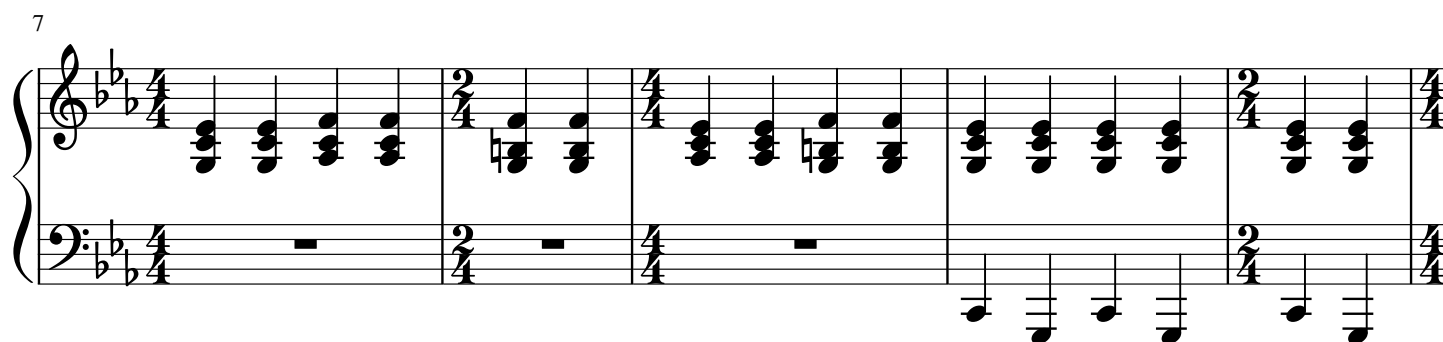
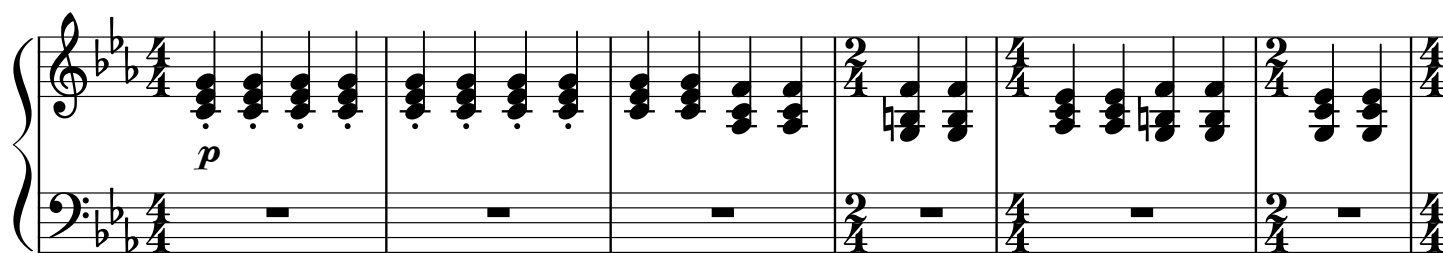


Горячий снег

М.Львова

Пахмутова



28

Measures 28-30 of a musical score. The key signature is two flats (B-flat and E-flat). The time signature is 4/4. The score is written for piano (p) and features a complex rhythmic pattern in the right hand, with many beamed sixteenth and thirty-second notes. The left hand plays a steady eighth-note accompaniment. Measure 30 shows a change in the right-hand pattern.

31

Measures 31-33 of a musical score. The key signature is two flats (B-flat and E-flat). The time signature is 4/4. The score is written for piano (p) and features a complex rhythmic pattern in the right hand, with many beamed sixteenth and thirty-second notes. The left hand plays a steady eighth-note accompaniment. Measure 33 shows a change in the right-hand pattern.

34

Measures 34-36 of a musical score. The key signature is two flats (B-flat and E-flat). The time signature is 4/4. The score is written for piano (p) and features a complex rhythmic pattern in the right hand, with many beamed sixteenth and thirty-second notes. The left hand plays a steady eighth-note accompaniment. Measure 36 shows a change in the right-hand pattern.

37

Measures 37-41 of a musical score. The key signature is two flats (B-flat and E-flat). The time signature is 4/4. The score is written for piano (p) and features a complex rhythmic pattern in the right hand, with many beamed sixteenth and thirty-second notes. The left hand plays a steady eighth-note accompaniment. Measure 41 shows a change in the right-hand pattern.

42

Measures 42-46 of a musical score. The key signature is two flats (B-flat and E-flat). The time signature is 4/4. The score is written for piano (p) and features a complex rhythmic pattern in the right hand, with many beamed sixteenth and thirty-second notes. The left hand plays a steady eighth-note accompaniment. Measure 46 shows a change in the right-hand pattern.

50

Measures 50-55 of a musical score in B-flat major (two flats). The time signature changes between 2/4 and 4/4. The right hand features complex chords with many accidentals, while the left hand plays a simple eighth-note accompaniment.

56

Measures 56-60 of the musical score. The right hand plays chords, and the left hand plays a steady eighth-note accompaniment. The time signature continues to alternate between 2/4 and 4/4.

61

Measures 61-65 of the musical score. The right hand plays chords, and the left hand plays a steady eighth-note accompaniment. The time signature continues to alternate between 2/4 and 4/4.

66

Measures 66-70 of the musical score. Measure 66 has a crescendo. Measure 67 has a *pp* (pianissimo) dynamic. Measure 68 has a long note with an accent (>) and a slur. Measure 69 has a *ff* (fortissimo) dynamic. Measure 70 ends with a double bar line. The right hand plays chords, and the left hand plays a steady eighth-note accompaniment. The time signature continues to alternate between 2/4 and 4/4.